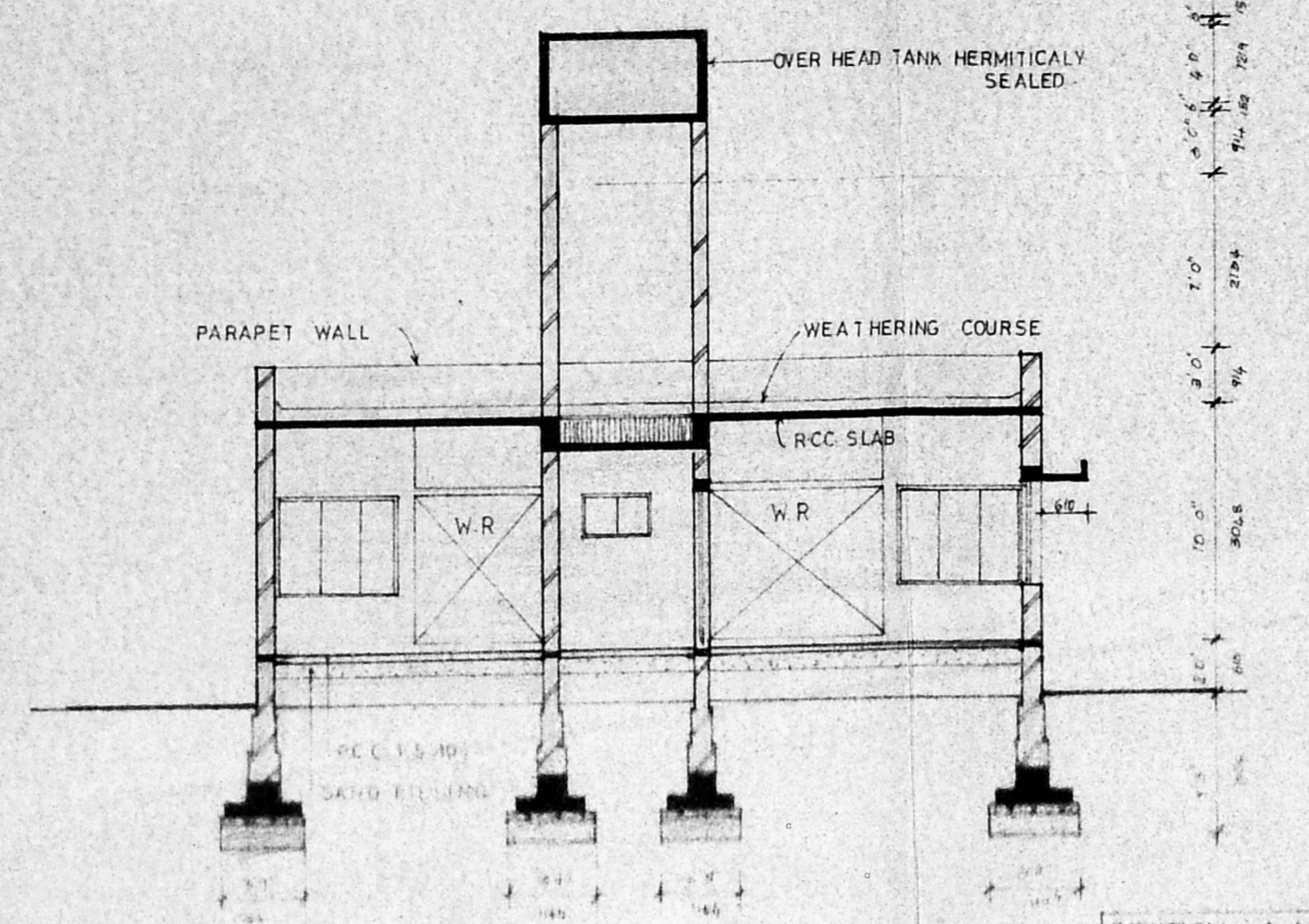
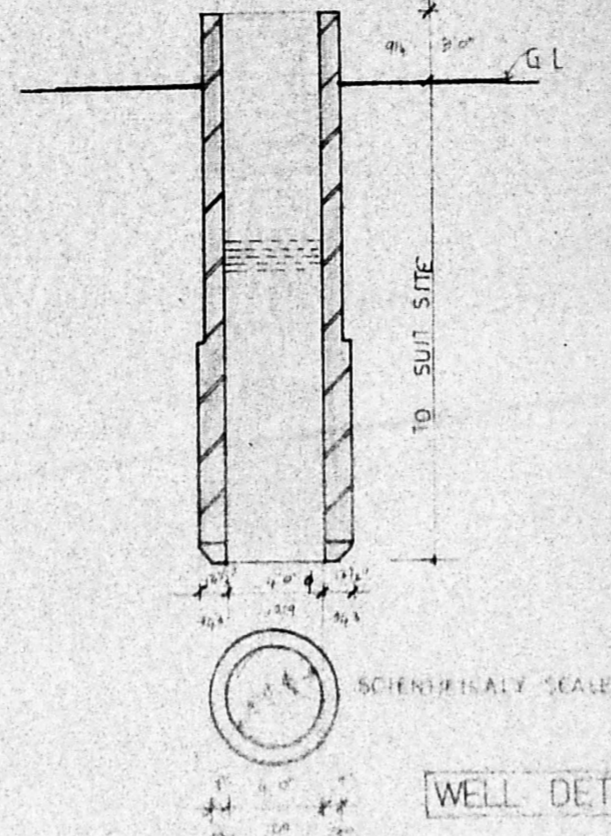


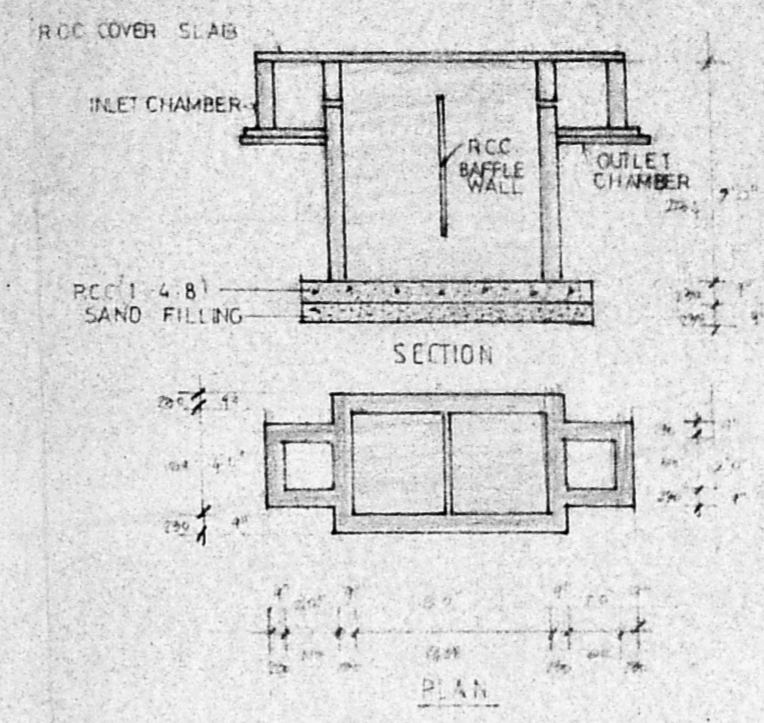
FRONT ELEVATION



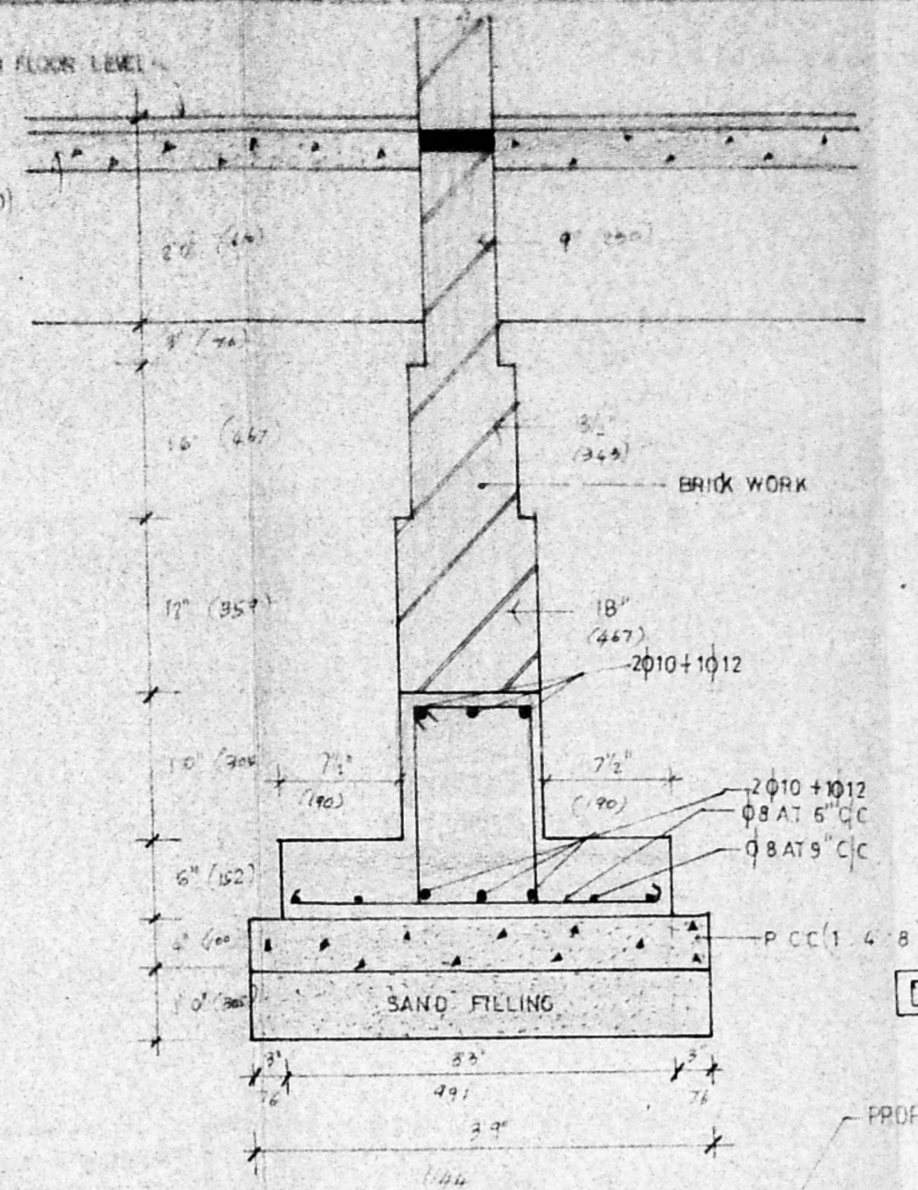
SECTION A-A



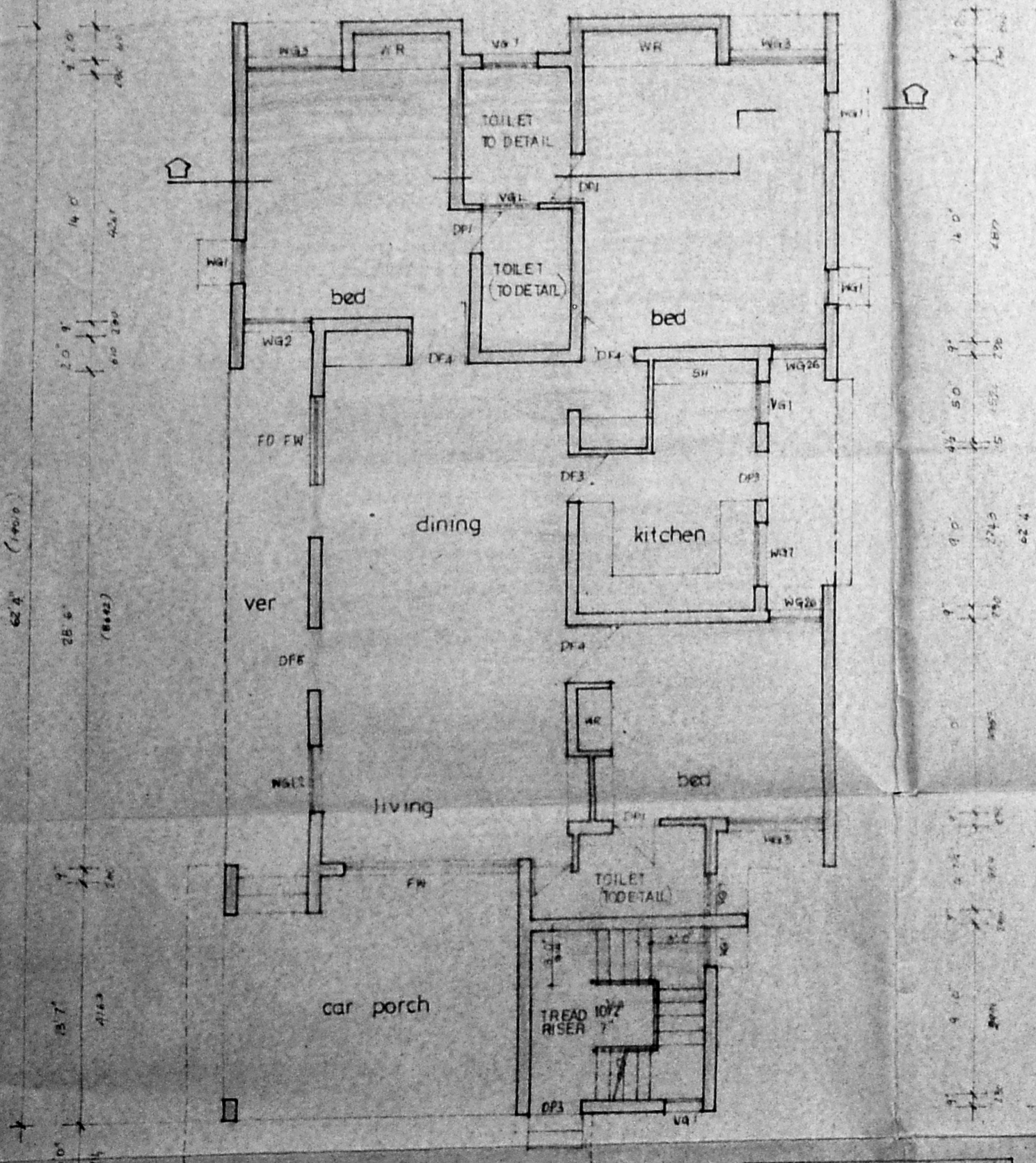
WELL DETAILS



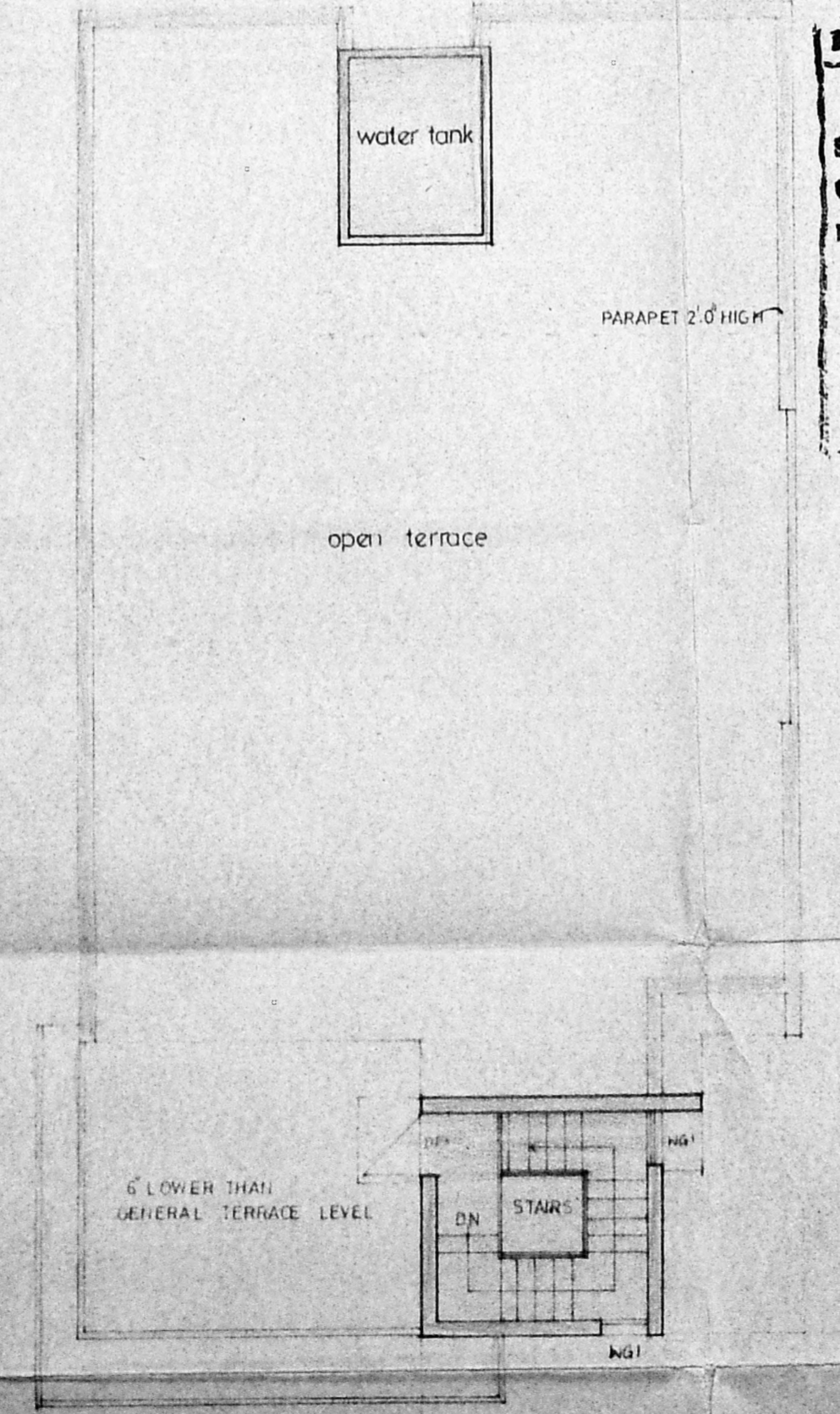
SEPTIC TANK DETAILS



DETAIL OF RAFT BEAM



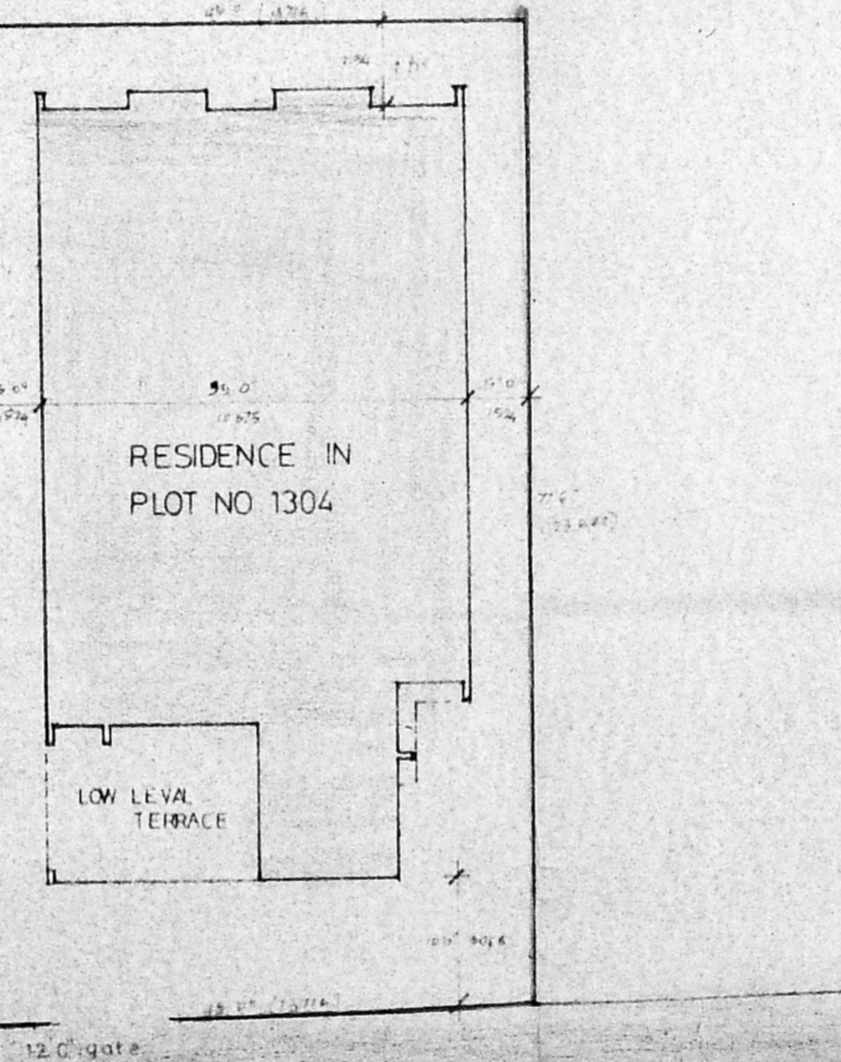
GROUND FLOOR PLAN



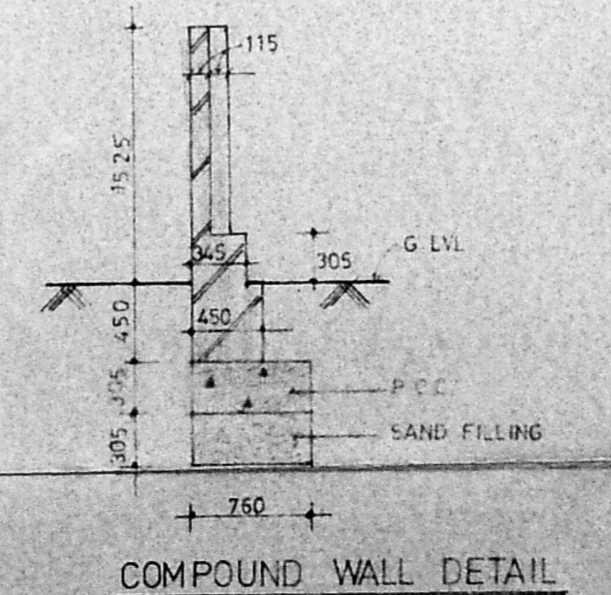
FIRST FLOOR PLAN

$9'6'' \times 7'6'' = 72'6''$
 $11'6'' \times 11'6'' = 133'6''$
 $62'6'' \times 35'0'' = 2192'6''$
 $15'9'' \times 6'9'' = 106'8''$

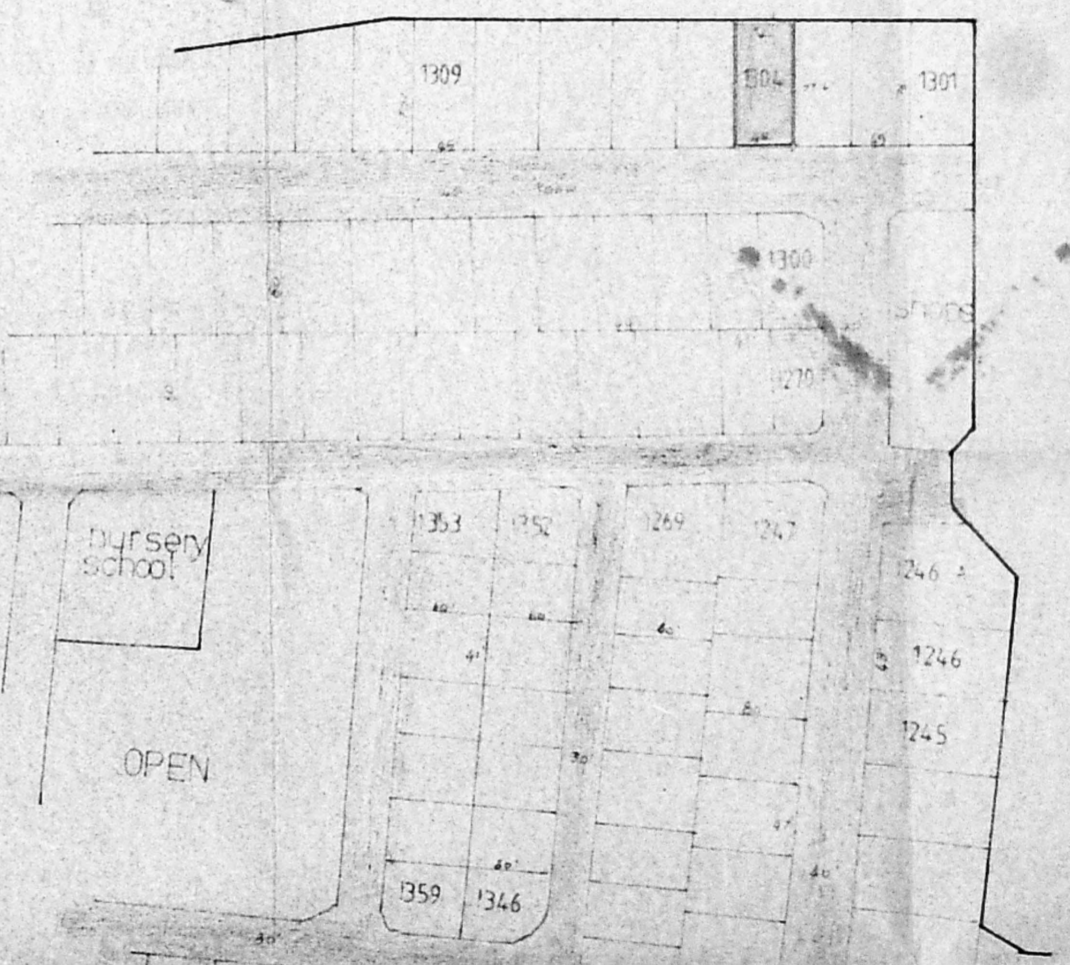
Planning Permit No. 4/130/90.
APPROVED
 Subject to the conditions in
 this office letter.
 No. A.1879/90 Dt. 8-2-90.
 Sd/- T. S. Srinivasan
 8/2/90.
FOR MEMBER SECRETARY
MADRAS METROPOLITAN
DEVELOPMENT AUTHORITY



SITE PLAN



COMPOUND WALL DETAIL



LOCATION PLAN

SCHEDULE OF WORKS

10'	2 1/2" x 2 1/2"	PAINTED	IRON	ROOFING
11'	3 1/2" x 3 1/2"	PAINTED	IRON	ROOFING
12'	4 1/2" x 4 1/2"	PAINTED	IRON	ROOFING
13'	5 1/2" x 5 1/2"	PAINTED	IRON	ROOFING
14'	6 1/2" x 6 1/2"	PAINTED	IRON	ROOFING
15'	7 1/2" x 7 1/2"	PAINTED	IRON	ROOFING
16'	8 1/2" x 8 1/2"	PAINTED	IRON	ROOFING
17'	9 1/2" x 9 1/2"	PAINTED	IRON	ROOFING
18'	10 1/2" x 10 1/2"	PAINTED	IRON	ROOFING
19'	11 1/2" x 11 1/2"	PAINTED	IRON	ROOFING
20'	12 1/2" x 12 1/2"	PAINTED	IRON	ROOFING
21'	13 1/2" x 13 1/2"	PAINTED	IRON	ROOFING
22'	14 1/2" x 14 1/2"	PAINTED	IRON	ROOFING
23'	15 1/2" x 15 1/2"	PAINTED	IRON	ROOFING
24'	16 1/2" x 16 1/2"	PAINTED	IRON	ROOFING
25'	17 1/2" x 17 1/2"	PAINTED	IRON	ROOFING
26'	18 1/2" x 18 1/2"	PAINTED	IRON	ROOFING
27'	19 1/2" x 19 1/2"	PAINTED	IRON	ROOFING
28'	20 1/2" x 20 1/2"	PAINTED	IRON	ROOFING
29'	21 1/2" x 21 1/2"	PAINTED	IRON	ROOFING
30'	22 1/2" x 22 1/2"	PAINTED	IRON	ROOFING
31'	23 1/2" x 23 1/2"	PAINTED	IRON	ROOFING
32'	24 1/2" x 24 1/2"	PAINTED	IRON	ROOFING
33'	25 1/2" x 25 1/2"	PAINTED	IRON	ROOFING
34'	26 1/2" x 26 1/2"	PAINTED	IRON	ROOFING
35'	27 1/2" x 27 1/2"	PAINTED	IRON	ROOFING
36'	28 1/2" x 28 1/2"	PAINTED	IRON	ROOFING
37'	29 1/2" x 29 1/2"	PAINTED	IRON	ROOFING
38'	30 1/2" x 30 1/2"	PAINTED	IRON	ROOFING
39'	31 1/2" x 31 1/2"	PAINTED	IRON	ROOFING
40'	32 1/2" x 32 1/2"	PAINTED	IRON	ROOFING
41'	33 1/2" x 33 1/2"	PAINTED	IRON	ROOFING
42'	34 1/2" x 34 1/2"	PAINTED	IRON	ROOFING
43'	35 1/2" x 35 1/2"	PAINTED	IRON	ROOFING
44'	36 1/2" x 36 1/2"	PAINTED	IRON	ROOFING
45'	37 1/2" x 37 1/2"	PAINTED	IRON	ROOFING
46'	38 1/2" x 38 1/2"	PAINTED	IRON	ROOFING
47'	39 1/2" x 39 1/2"	PAINTED	IRON	ROOFING
48'	40 1/2" x 40 1/2"	PAINTED	IRON	ROOFING
49'	41 1/2" x 41 1/2"	PAINTED	IRON	ROOFING
50'	42 1/2" x 42 1/2"	PAINTED	IRON	ROOFING
51'	43 1/2" x 43 1/2"	PAINTED	IRON	ROOFING
52'	44 1/2" x 44 1/2"	PAINTED	IRON	ROOFING
53'	45 1/2" x 45 1/2"	PAINTED	IRON	ROOFING
54'	46 1/2" x 46 1/2"	PAINTED	IRON	ROOFING
55'	47 1/2" x 47 1/2"	PAINTED	IRON	ROOFING
56'	48 1/2" x 48 1/2"	PAINTED	IRON	ROOFING
57'	49 1/2" x 49 1/2"	PAINTED	IRON	ROOFING
58'	50 1/2" x 50 1/2"	PAINTED	IRON	ROOFING
59'	51 1/2" x 51 1/2"	PAINTED	IRON	ROOFING
60'	52 1/2" x 52 1/2"	PAINTED	IRON	ROOFING
61'	53 1/2" x 53 1/2"	PAINTED	IRON	ROOFING
62'	54 1/2" x 54 1/2"	PAINTED	IRON	ROOFING
63'	55 1/2" x 55 1/2"	PAINTED	IRON	ROOFING
64'	56 1/2" x 56 1/2"	PAINTED	IRON	ROOFING
65'	57 1/2" x 57 1/2"	PAINTED	IRON	ROOFING
66'	58 1/2" x 58 1/2"	PAINTED	IRON	ROOFING
67'	59 1/2" x 59 1/2"	PAINTED	IRON	ROOFING
68'	60 1/2" x 60 1/2"	PAINTED	IRON	ROOFING
69'	61 1/2" x 61 1/2"	PAINTED	IRON	ROOFING
70'	62 1/2" x 62 1/2"	PAINTED	IRON	ROOFING
71'	63 1/2" x 63 1/2"	PAINTED	IRON	ROOFING
72'	64 1/2" x 64 1/2"	PAINTED	IRON	ROOFING
73'	65 1/2" x 65 1/2"	PAINTED	IRON	ROOFING
74'	66 1/2" x 66 1/2"	PAINTED	IRON	ROOFING
75'	67 1/2" x 67 1/2"	PAINTED	IRON	ROOFING
76'	68 1/2" x 68 1/2"	PAINTED	IRON	ROOFING
77'	69 1/2" x 69 1/2"	PAINTED	IRON	ROOFING
78'	70 1/2" x 70 1/2"	PAINTED	IRON	ROOFING
79'	71 1/2" x 71 1/2"	PAINTED	IRON	ROOFING
80'	72 1/2" x 72 1/2"	PAINTED	IRON	ROOFING
81'	73 1/2" x 73 1/2"	PAINTED	IRON	ROOFING
82'	74 1/2" x 74 1/2"	PAINTED	IRON	ROOFING
83'	75 1/2" x 75 1/2"	PAINTED	IRON	ROOFING
84'	76 1/2" x 76 1/2"	PAINTED	IRON	ROOFING
85'	77 1/2" x 77 1/2"	PAINTED	IRON	ROOFING
86'	78 1/2" x 78 1/2"	PAINTED	IRON	ROOFING
87'	79 1/2" x 79 1/2"	PAINTED	IRON	ROOFING
88'	80 1/2" x 80 1/2"	PAINTED	IRON	ROOFING
89'	81 1/2" x 81 1/2"	PAINTED	IRON	ROOFING
90'	82 1/2" x 82 1/2"	PAINTED	IRON	ROOFING
91'	83 1/2" x 83 1/2"	PAINTED	IRON	ROOFING
92'	84 1/2" x 84 1/2"	PAINTED	IRON	ROOFING
93'	85 1/2" x 85 1/2"	PAINTED	IRON	ROOFING
94'	86 1/2" x 86 1/2"	PAINTED	IRON	ROOFING
95'	87 1/2" x 87 1/2"	PAINTED	IRON	ROOFING
96'	88 1/2" x 88 1/2"	PAINTED	IRON	ROOFING
97'	89 1/2" x 89 1/2"	PAINTED	IRON	ROOFING
98'	90 1/2" x 90 1/2"	PAINTED	IRON	ROOFING
99'	91 1/2" x 91 1/2"	PAINTED	IRON	ROOFING
100'	92 1/2" x 92 1/2"	PAINTED	IRON	ROOFING

SPECIFICATION

FOUNDATION: R.C.C. RAFT BEAM (1:2:4) OVER 4" (100) THK P.C.C. (1:1.5:10) OVER 12" (300) THK SAND FILLING.
 BASEMENT: BRICK MASONRY IN CEMENT AND R.C.C. PLASTER.
 SUPERSTRUCTURE: BRICK WORK IN CEMENT AND PLASTERING IN CEMENT AND PLASTER.
 ROOF: R.C.C. SLAB (1:2:4).
 FLOORING: ROUGH FLOOR FINISH OVER 4" P.C.C. OVER 4" SAND FILLING.
 WEATHERING COURSE: ONE COURSE OF PRESSED FEET TILES SET IN CEMENT OVER BRICKWORK (CANTILEVER) LAID TO SLOPE.

AREA: 152.97 Sqm.

PROPOSED RESIDENCE
 FOR
 COL. RAGHUNATHAN
 AT
 PLOT NO 1304
 ANNA NAGAR WESTERN EXTENSION.

PREVIOUS SANC NOS.
 B.A. NO. 12821/82 DT. 1.11.83
 B.A. NO. 1585/87 DT. 21.9.87

REVISED WORKING DRAWING
 PLANS, SECTIONS, ELEVATION, WELL DETAIL,
 SEPTIC TANK DETAILS, SITE PLAN AND TOPO PLAN.

JOB NO.	BB 282	DATE	22. NOVEMBER 1991.
DRG NO.	15.	DRAWN	[Signature]
SCALE	1:50 (1:100)	CHECKED	

[Signature]
 signature of applicant.

RAJASINGH AND BELLAPPA CONSULTING ENGINEERS
 20/21, C.A.S.E. MAJOR ROAD, EGMORE, MADRAS - 6

[Signature]
 R. BENJAMIN
 E. ARCH. A.I.T.E.
 Licensed Surveyor No. 187, No. 134
 Reg. No. CA/55/10, 24.